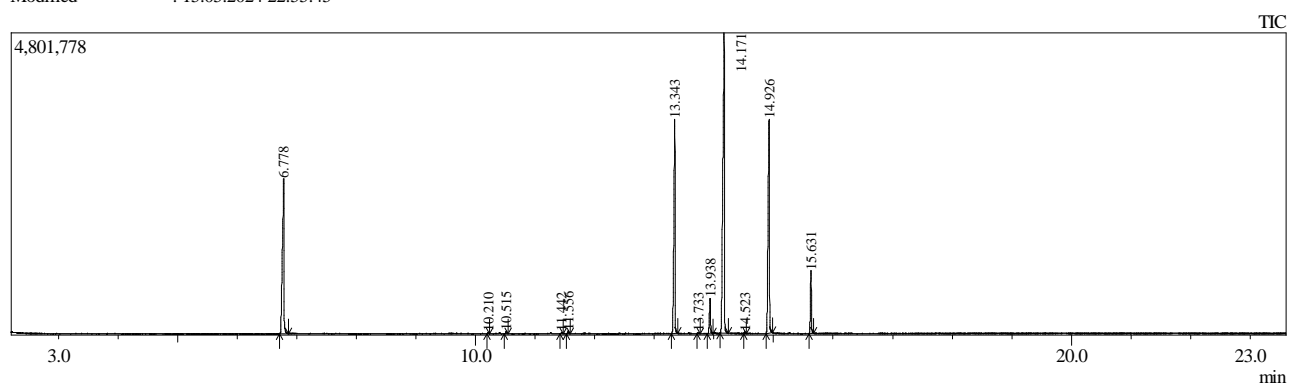


Sample Information

Analyzed by : Admin
 Analyzed : 15.05.2024 22:32:05
 Sample Type : Unknown
 Level # : 1
 Sample Name : 1865-4 Blind estradiol screening
 Sample ID :
 IS Amount : [1]=1
 Sample Amount : 1
 Dilution Factor : 1
 Vial # : 126
 Injection Volume : 0.50
 Data File : C:\GCMSsolution\Data\Project1\1865-4 Blind estradiol screening _126.qgd
 Org Data File : C:\GCMSsolution\Data\Project1\1865-4 Blind estradiol screening _126.qgd
 Method File : C:\GCMSsolution\Data\Project1\the real screening gradient.qgm
 Org Method File : C:\GCMSsolution\Data\Project1\the real screening gradient.qgm
 Report File : C:\GCMSsolution\Data\Project1\Simple Qualitative.qgr
 Tuning File : C:\GCMSsolution\System\Tune1\HIGH CONCENTRATION TUNE.qgt
 Modified by : Admin
 Modified : 15.05.2024 22:55:45



Peak Report TIC

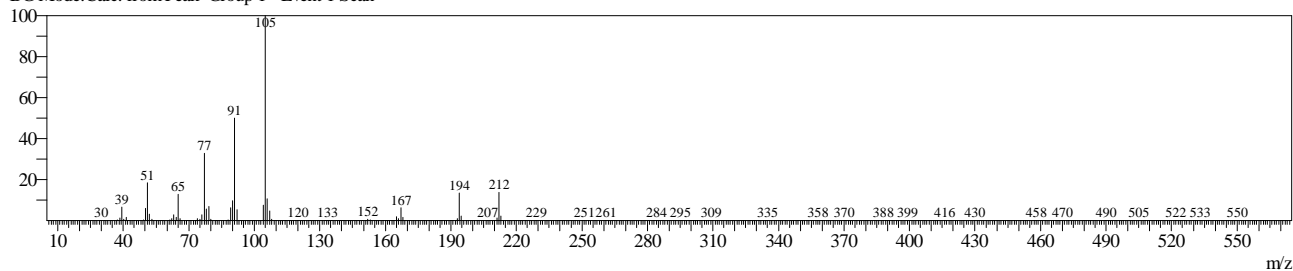
| Peak# | R. Time | Area | Area% | Name |
|-------|---------|----------|--------|--|
| 1 | 6.778 | 4508964 | 17.94 | Benzyl Benzoate |
| 2 | 10.210 | 22958 | 0.09 | 1-Hydroxy-3-(octanoyloxy)propan-2-yl decanoate |
| 3 | 10.515 | 46042 | 0.18 | 1,3-Dioctanoïn |
| 4 | 11.442 | 21331 | 0.08 | 1-Hydroxy-3-(octanoyloxy)propan-2-yl decanoate |
| 5 | 11.556 | 49009 | 0.19 | 1-Hydroxy-3-(octanoyloxy)propan-2-yl decanoate |
| 6 | 13.343 | 4713290 | 18.75 | Glycerol tricaprlylate |
| 7 | 13.733 | 33096 | 0.13 | 2-(Nonanoyloxy)propane-1,3-diyl dioctanoate |
| 8 | 13.938 | 761701 | 3.03 | Estradiol Valerate |
| 9 | 14.171 | 8446294 | 33.60 | 2-(Decanoyloxy)propane-1,3-diyl dioctanoate |
| 10 | 14.523 | 30695 | 0.12 | 1-(Nonanoyloxy)-3-(octanoyloxy)propan-2-yl decanoate |
| 11 | 14.926 | 5372896 | 21.38 | 3-(Octanoyloxy)propane-1,2-diyl bis(decanoate) |
| 12 | 15.631 | 1128951 | 4.49 | Decanoic acid, 1,2,3-propanetriyl ester |
| | | 25135227 | 100.00 | |

Line#:1 R.Time:6.778(Scan#:5495)

MassPeaks:289

RawMode:Averaged 6.777-6.779(5494-5496) BasePeak:105(699883)

BG Mode:Calc. from Peak Group 1 - Event 1 Scan

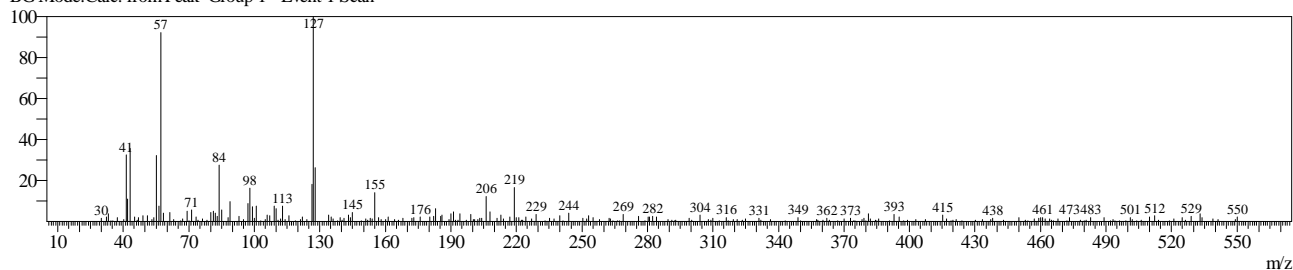


Line#:2 R.Time:10.210(Scan#:9613)

MassPeaks:267

RawMode:Averaged 10.209-10.211(9612-9614) BasePeak:127(3918)

BG Mode:Calc. from Peak Group 1 - Event 1 Scan

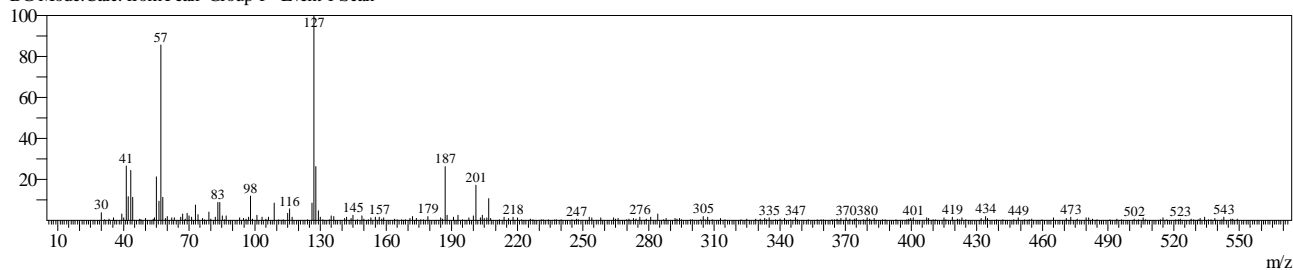


Line#:3 R.Time:10.515(Scan#:9979)

MassPeaks:283

RawMode:Averaged 10.514-10.516(9978-9980) BasePeak:127(7554)

BG Mode:Calc. from Peak Group 1 - Event 1 Scan

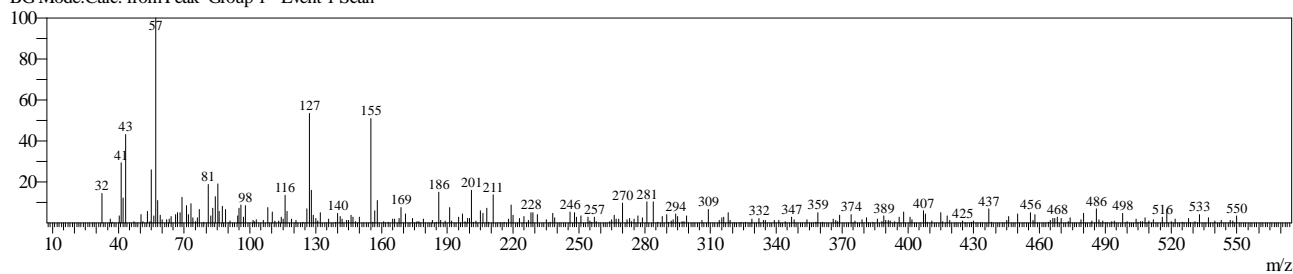


Line#:4 R.Time:11.442(Scan#:11092)

MassPeaks:274

RawMode:Averaged 11.442-11.443(11091-11093) BasePeak:57(2667)

BG Mode:Calc. from Peak Group 1 - Event 1 Scan

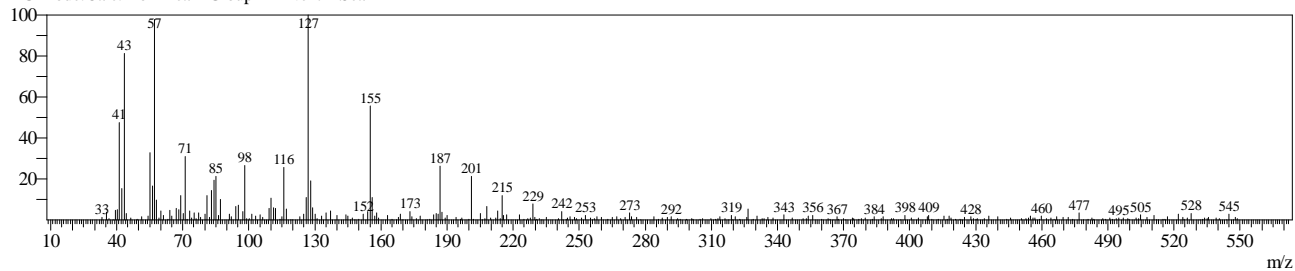


Line#:5 R.Time:11.556(Scan#:11228)

MassPeaks:297

RawMode:Averaged 11.555-11.557(11227-11229) BasePeak:127(4757)

BG Mode:Calc. from Peak Group 1 - Event 1 Scan

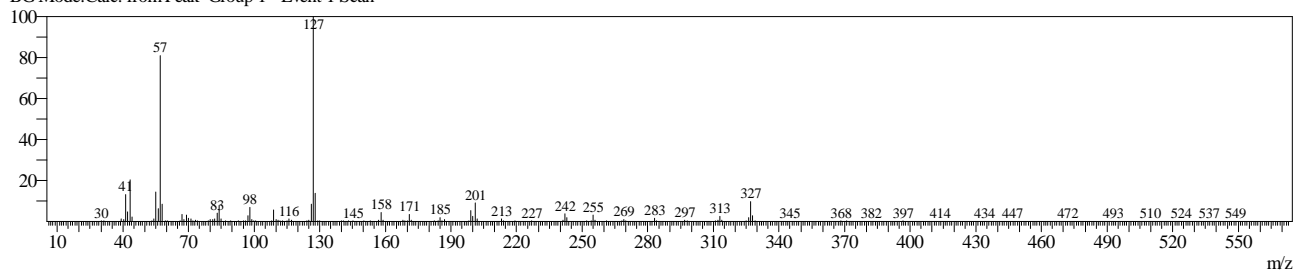


Line#:6 R.Time:13.342(Scan#:13372)

MassPeaks:368

RawMode:Averaged 13.342-13.343(13371-13373) BasePeak:127(834492)

BG Mode:Calc. from Peak Group 1 - Event 1 Scan

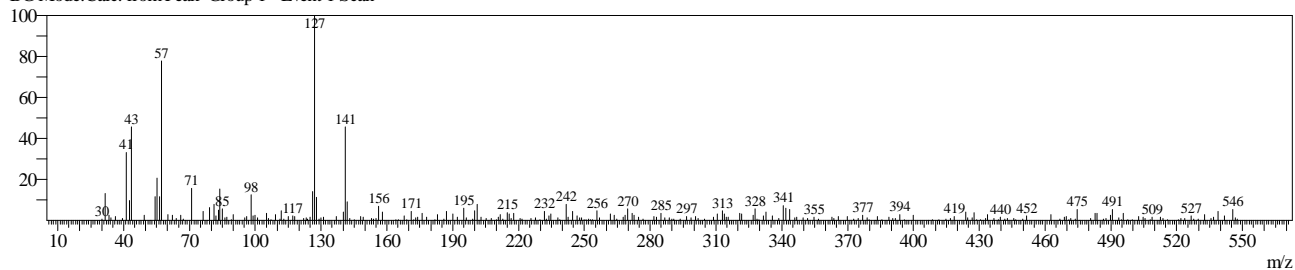


Line#:7 R.Time:13.733(Scan#:13840)

MassPeaks:271

RawMode:Averaged 13.732-13.733(13839-13841) BasePeak:127(3711)

BG Mode:Calc. from Peak Group 1 - Event 1 Scan

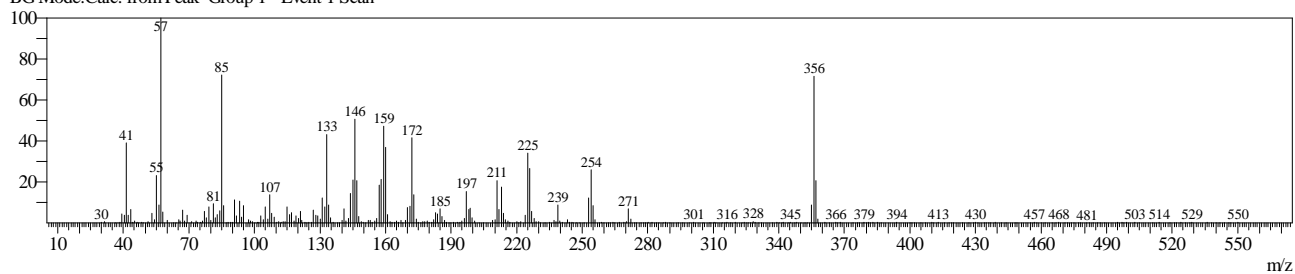


Line#:8 R.Time:13.938(Scan#:14086)

MassPeaks:346

RawMode:Averaged 13.937-13.938(14085-14087) BasePeak:57(44262)

BG Mode:Calc. from Peak Group 1 - Event 1 Scan

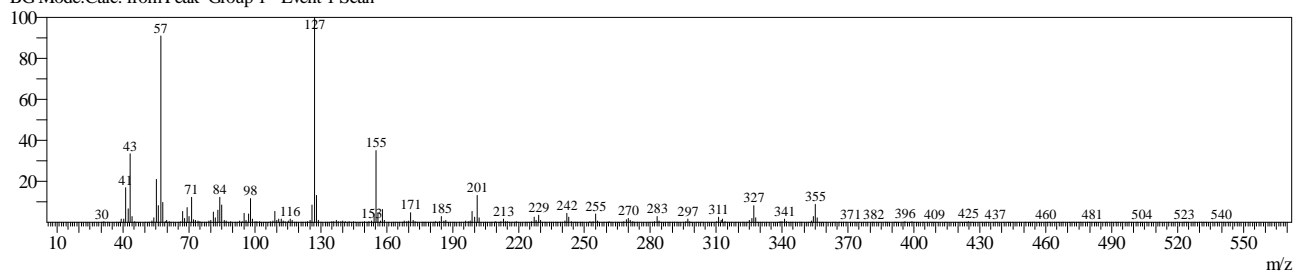


Line#:9 R.Time:14.172(Scan#:14367)

MassPeaks:380

RawMode:Averaged 14.171-14.172(14366-14368) BasePeak:127(788644)

BG Mode:Calc. from Peak Group 1 - Event 1 Scan

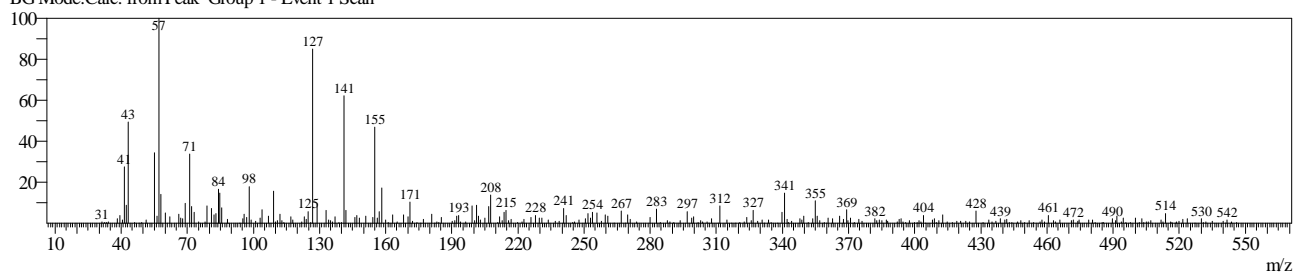


Line#:10 R.Time:14.523(Scan#:14788)

MassPeaks:298

RawMode:Averaged 14.522-14.523(14787-14789) BasePeak:57(3263)

BG Mode:Calc. from Peak Group 1 - Event 1 Scan

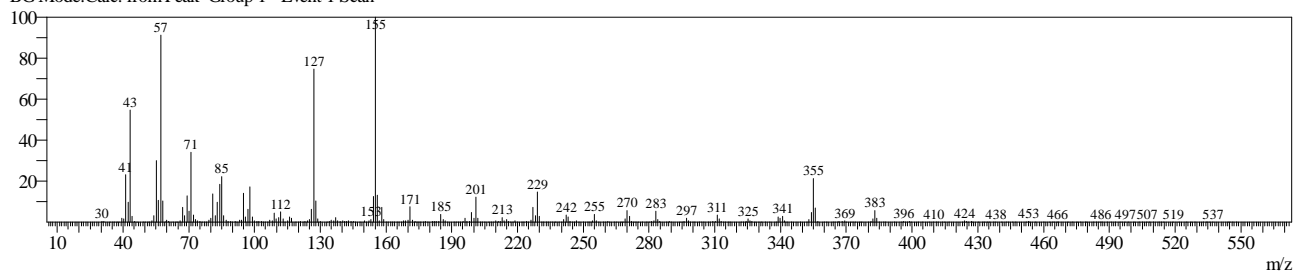


Line#:11 R.Time:14.926(Scan#:15272)

MassPeaks:391

RawMode:Averaged 14.925-14.927(15271-15273) BasePeak:155(387006)

BG Mode:Calc. from Peak Group 1 - Event 1 Scan



Line#:12 R.Time:15.631(Scan#:16118)

MassPeaks:375

RawMode:Averaged 15.630-15.632(16117-16119) BasePeak:155(180557)

BG Mode:Calc. from Peak Group 1 - Event 1 Scan

